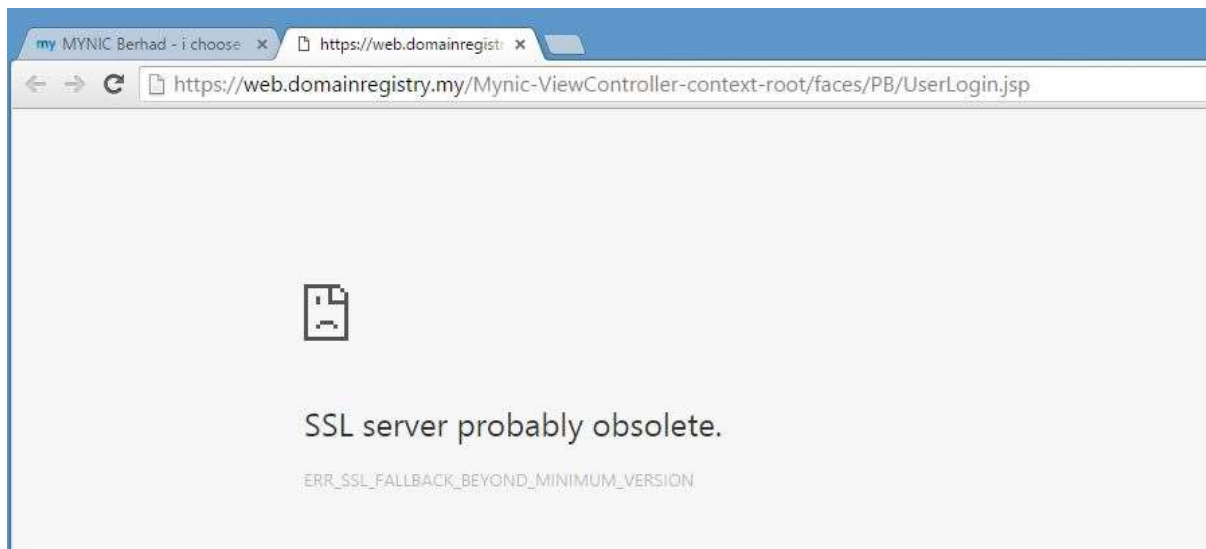


How to change TLS preferences in Chrome

The default value of minimum SSL/TLS version can be changed by adding Chrome's command line switch/flag (`--ssl-version-fallback-min=tls1`) to Chrome's Windows shortcut.

Step-by-step guide:

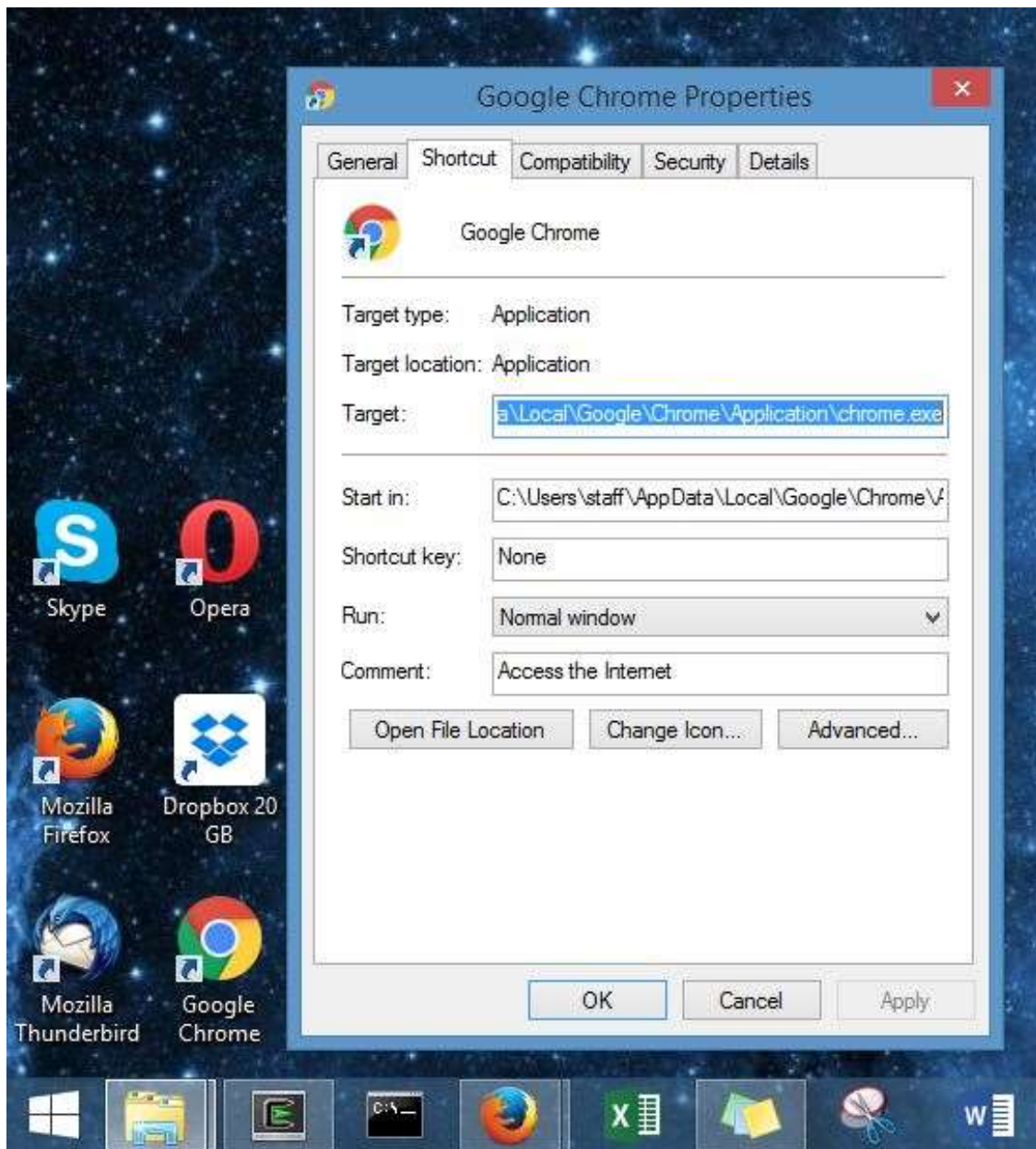
1. Before changing TLS preference, the browser displays the message below:



2. Locate Google Chrome shortcut icon placed on the desktop



3. Right-click on Chrome's icon, and select Properties. The Shortcut tab should open up automatically.



4. At the end of the Target box, add space and then the command line switch "--ssl-version-fallback-min=tlsl1", so that the full command line in the Target box is written like below:

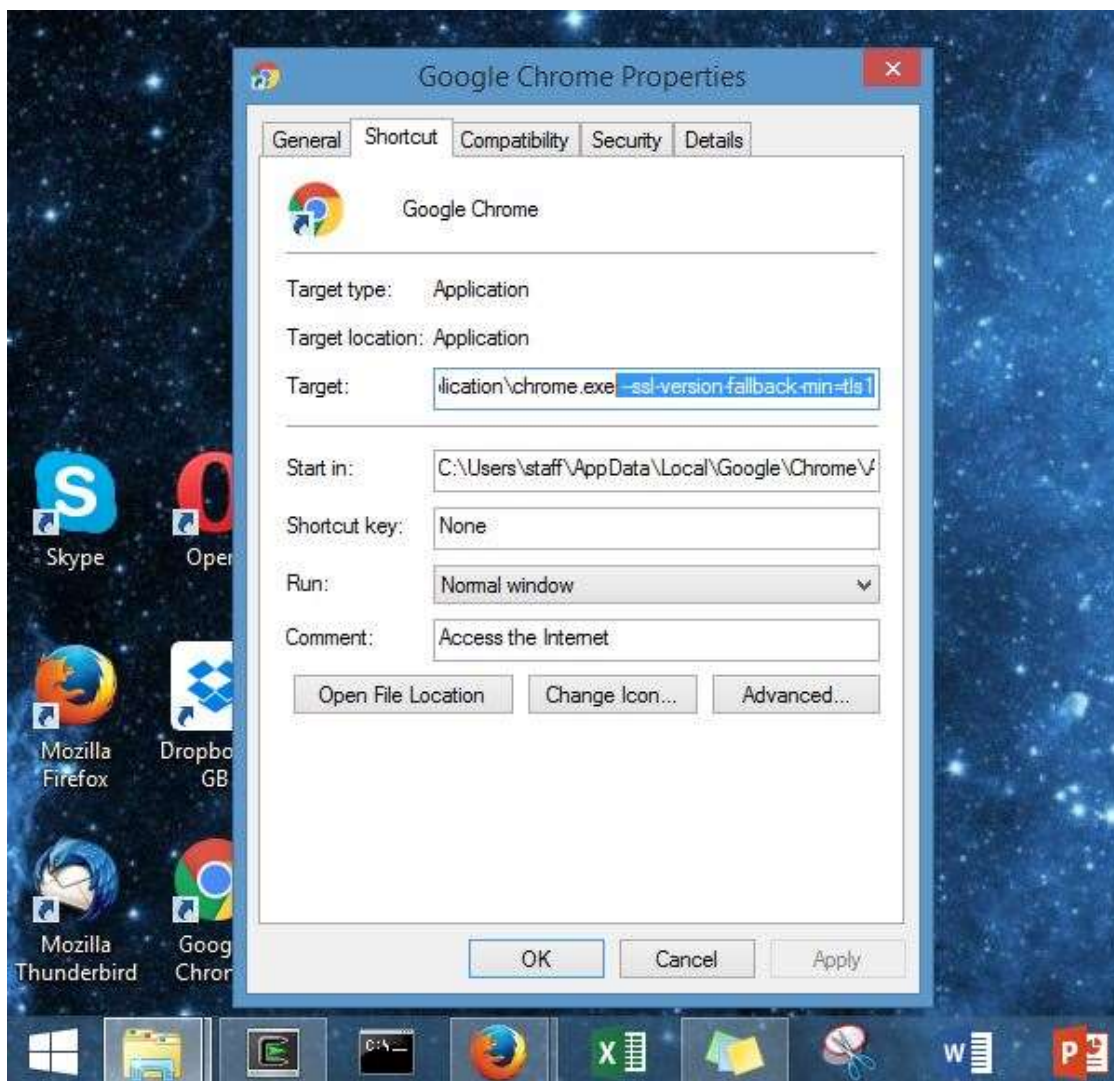
```
C:\Users\staff\AppData\Local\Google\Chrome\Application\chrome.exe --ssl-version-fallback-min=tlsl1
```

(Note: "staff" is the user name on your computer)

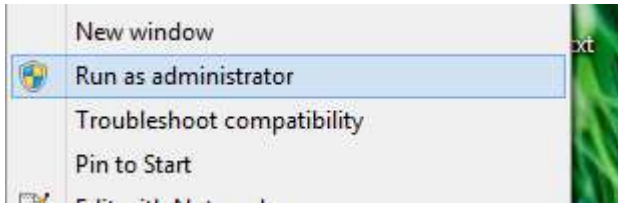
If the link is within quote ("") add space and then the command after the quote e.g.:

```
"C:\Program Files (x86)\Google\Chrome\Application\chrome.exe" --ssl-version-fallback-min=tlsl1
```

Save the edited Target by clicking Apply and OK.



5. Right-click on the Google Chrome icon and pick “Run as Administrator” (This only need to be done for the first time) to start the program with additional command line switch (flag).



Now, when you go to the URL, the browser displays the usual page content.

